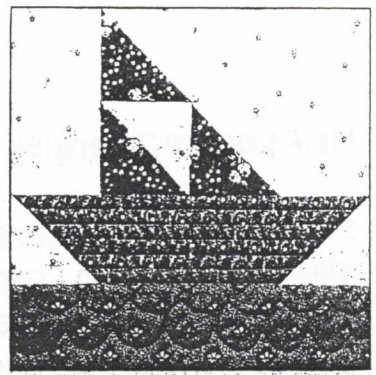


Block of the Month.
Compliments of Virginia H.
Sail Boat

12 1/2" unfinished (12" finished)



Fabric Amounts:

| | |
|------------------------|------------------|
| Background | 5" x 33" |
| Red (Sail) | 5" x 9" |
| Brown or Yellow (Boat) | 4 1/2" x 13 1/2" |
| Blue (Water) | 4 1/2" x 13 1/2" |

Cutting Instructions:

Cut:

Background

- ✓ (2) 4" squares
- ✓ (3) 3 1/2" squares
- ✓ (2) 3 1/2" x 6 1/2" rectangles

Red (Sail)

- ✓ (2) 4" squares

Brown or Yellow (Boat)

- ✓ (1) 3 1/2" x 12 1/2" rectangle

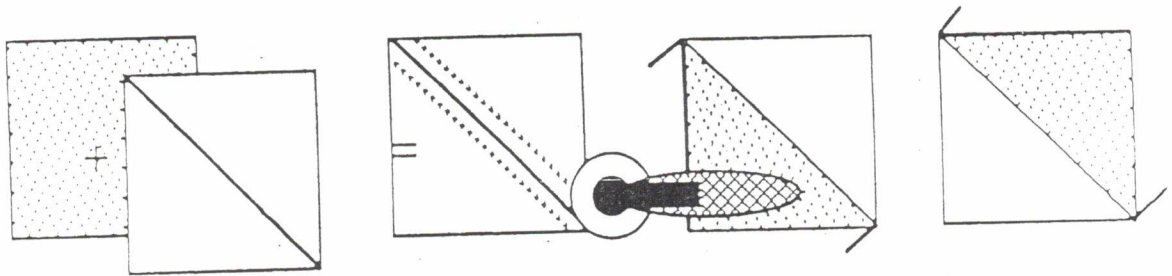
Blue (Water)

- ✓ (1) 3 1/2" x 12 1/2" rectangle

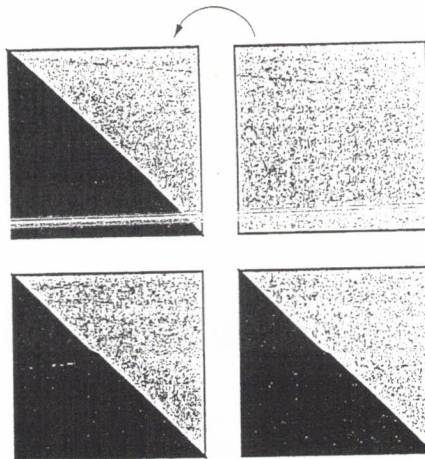
TIP: Organize your cutting. Take a few minutes to write all the cut sizes on sticky notes. Then, cut the largest pieces first, working in descending order, through each fabric.

Half Square Triangles

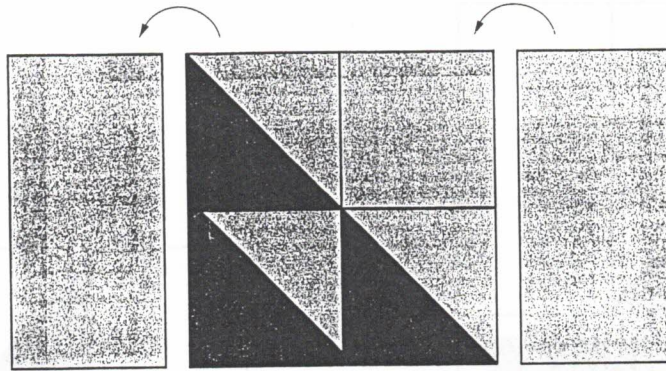
1. Using one Background 4" square and one red 4" square, draw a diagonal line from corner to corner on the back side of the Background square. Sew a 1/4" away on each side of the drawn line. Cut the square apart on the drawn diagonal line. Trim off the "dog ears." Repeat this process once for a total of four (4) half square triangles. See diagram below.



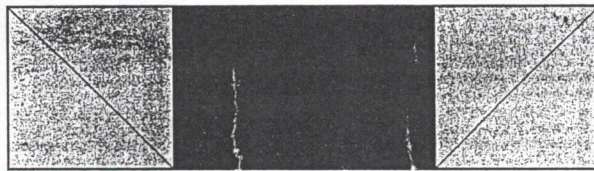
2. Square up three of the Sail patches (half square triangles) to 3 1/2". The fourth patch is an extra.
3. Lay out the three Sail squares with one Sky square as shown below and stitch together.



4. Sew a $3\frac{1}{2}$ " \times $6\frac{1}{2}$ " Sky piece to each side of the Sail as shown below. Press the seams away from the Sail.



5. Draw a diagonal line on the wrong side of two of the $3\frac{1}{2}$ " Sky squares and place them at each end of the Boat fabric as shown below.



6. Sew, press and trim excess $\frac{1}{4}$ " from sewn lines.

